



Revisions:

- Revision A 9-7-20. Staircase position amended to preserve buttress wall, rooflights added to main rooms.
- Rev B 14.10.21 Staircase re-positioned, accessible wc enlarged.
- Rev C 21.1.22 for planning appn.
- Rev D 18.5.22 rooflights changed to first floor rooms, rooms renamed as community rooms.

Project:
Clipstone Social Club

Drawing:
Proposed First Floor plan - new parish council facilities

Drawing No.:
19/25/10 D

Date: August 2019 | Scale: 1:50 @ A1 size



Groundworks Architects LLP
Unit 35, Avenue C,
Sneinton Market,
Nottingham, NG1 1DW

T: 01159417007
enquiries@groundworksarchitects.co.uk
www.groundworksarchitects.co.uk

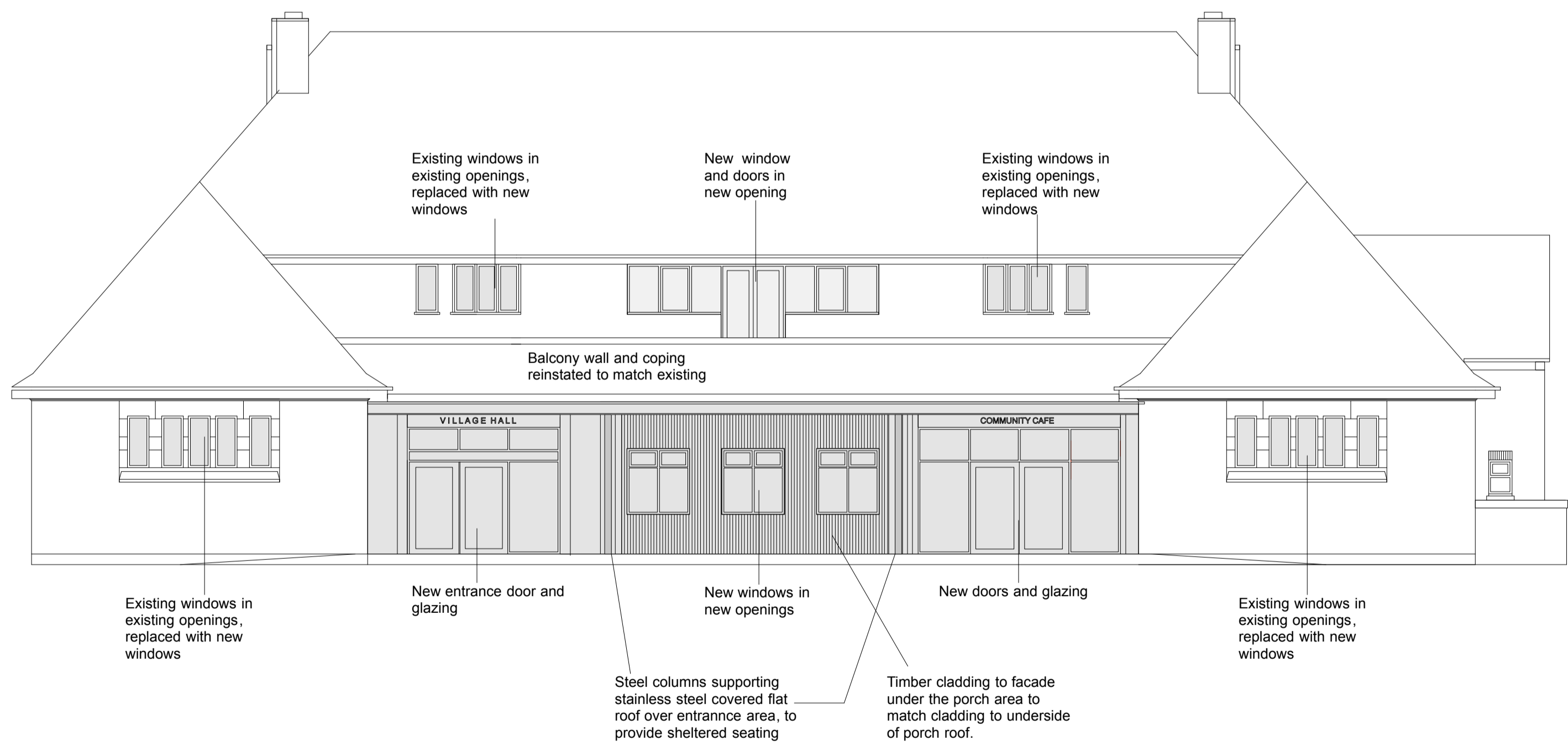
REAR ELEVATION 1:100 scale



SIDE ELEVATION 1:100 scale



FRONT ELEVATION 1:100 scale



Revisions:
 Rev A 14.10.21 Storage rooms at rear retained
 Rev B updated for planning application 14.1.22
 Rev C 18.5.22 number of velux rooflights to rear roof reduced

Project:
 Clipstone Social Club
 Drawing:
 Proposed Elevations - new parish council facilities

Drawing No.:
19/25/11C

Date: August 2019 Scale: 1:100 @ A1 size



Groundworks Architects LLP
 Unit 35, Avenue C,
 Sneinton Market,
 Nottingham, NG1 1DW

t: 01159417007
 enquiries@groundworksarchitects.co.uk
 www.groundworksarchitects.co.uk